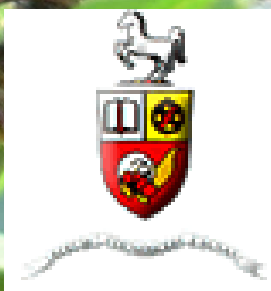
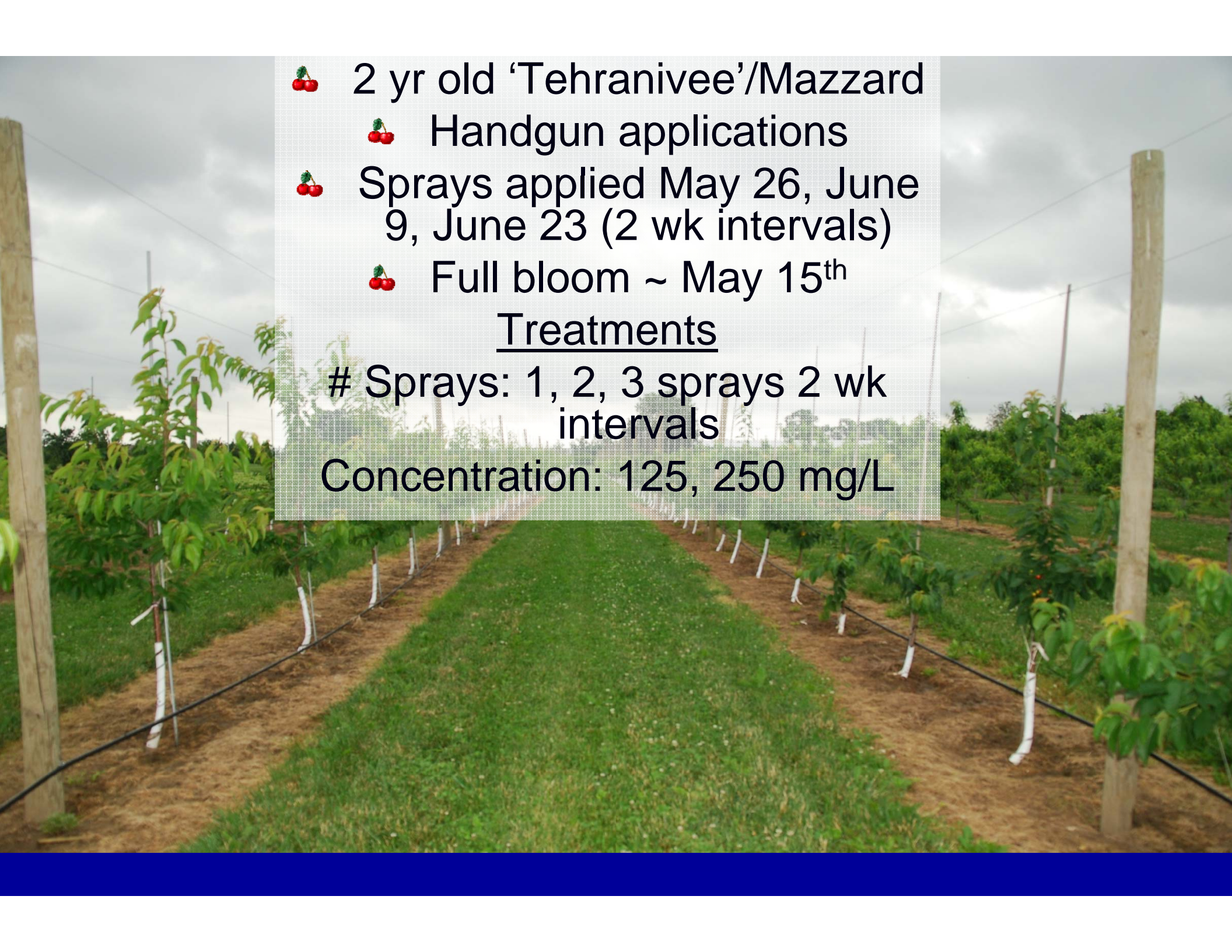


Growth Response of Sweet Cherries to Prohexidione



**John A. Cline, Tree Fruit Physiology
University of Guelph
www.plant.uoguelph.ca/treefruit**

- 
- 🍒 2 yr old 'Tehranivee'/Mazzard
 - 🍒 Handgun applications
 - 🍒 Sprays applied May 26, June 9, June 23 (2 wk intervals)
 - 🍒 Full bloom ~ May 15th

Treatments

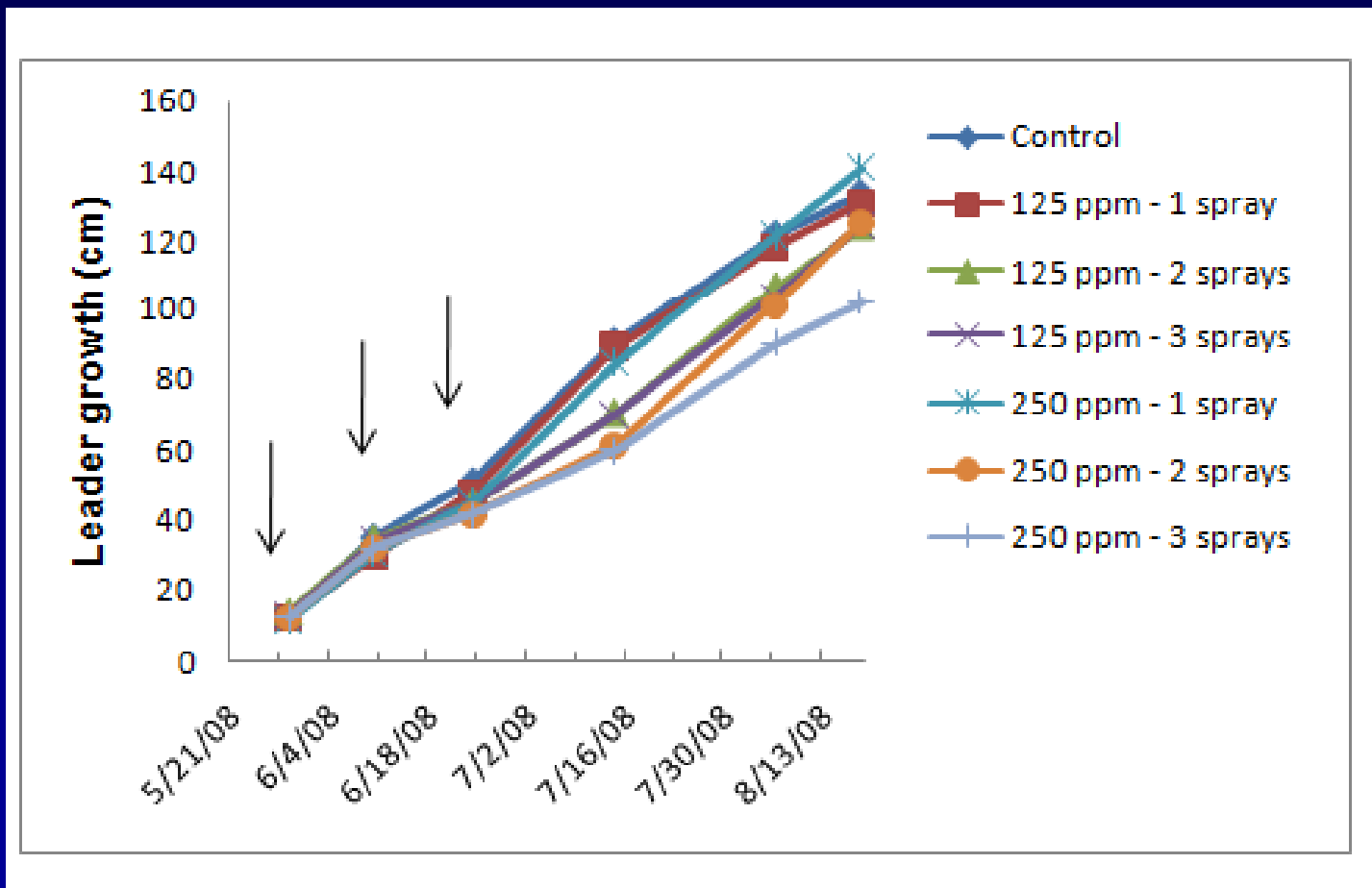
Sprays: 1, 2, 3 sprays 2 wk intervals

Concentration: 125, 250 mg/L

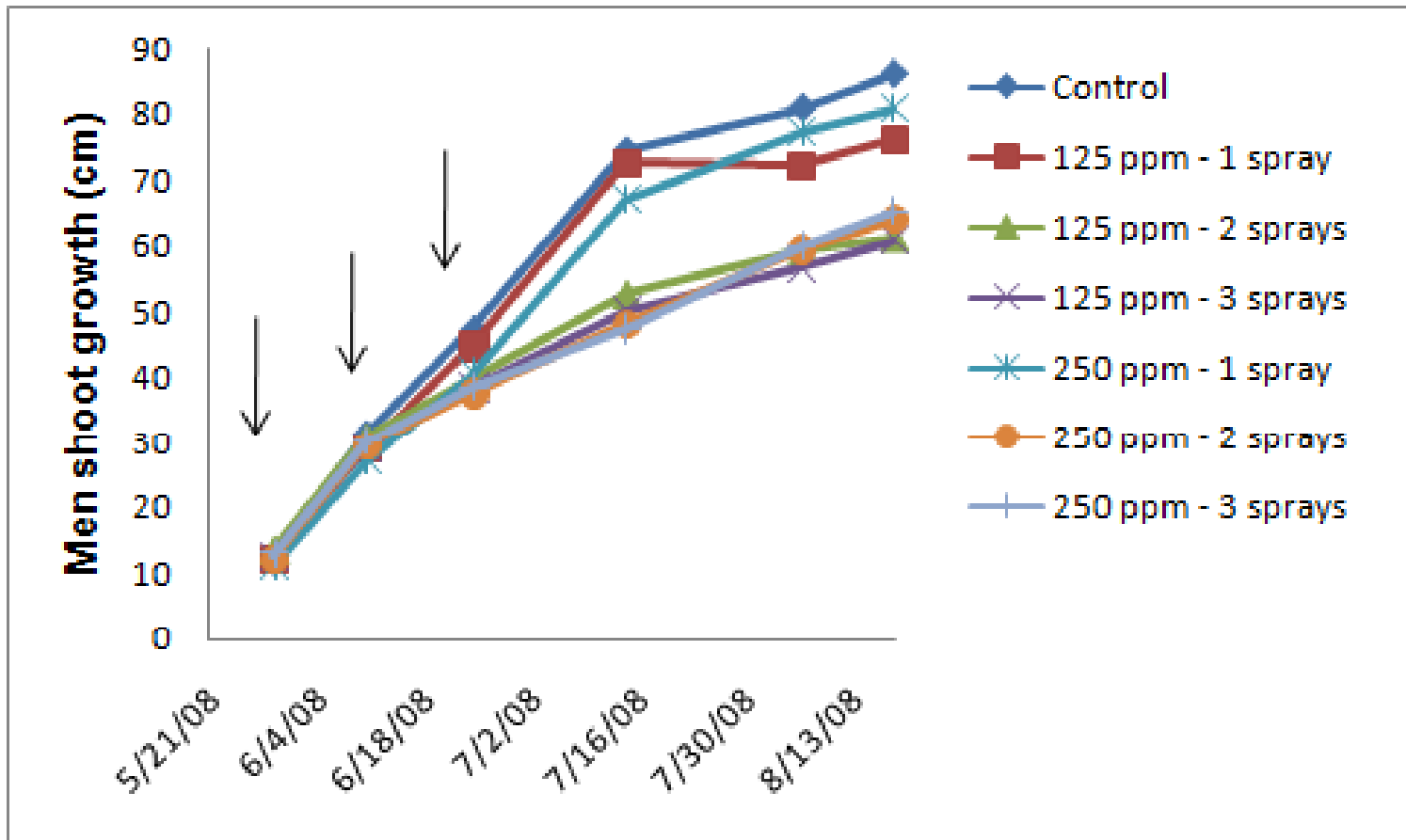
July 5 2008



Mean shoot growth (cm)



Mean shoot growth (cm)



- 1 spray ineffective
- 2 sprays as efficacious as 3
- 125 mg/L as effective as 250 mg/L
- 30% overall reduction in avg shoot growth
- Response 2 weeks after application

Acknowledgements

