

**Pre-harvest drop of McIntosh
apples as affected by Fruitone-N[®]
and Fruitone-L[®] alone or in
combination with AVG**

John Cline

**University of Guelph,
Simcoe & Vineland Campuses**

Tel: 519-426-7127 Ext 331

Jcline@uoguelph.ca



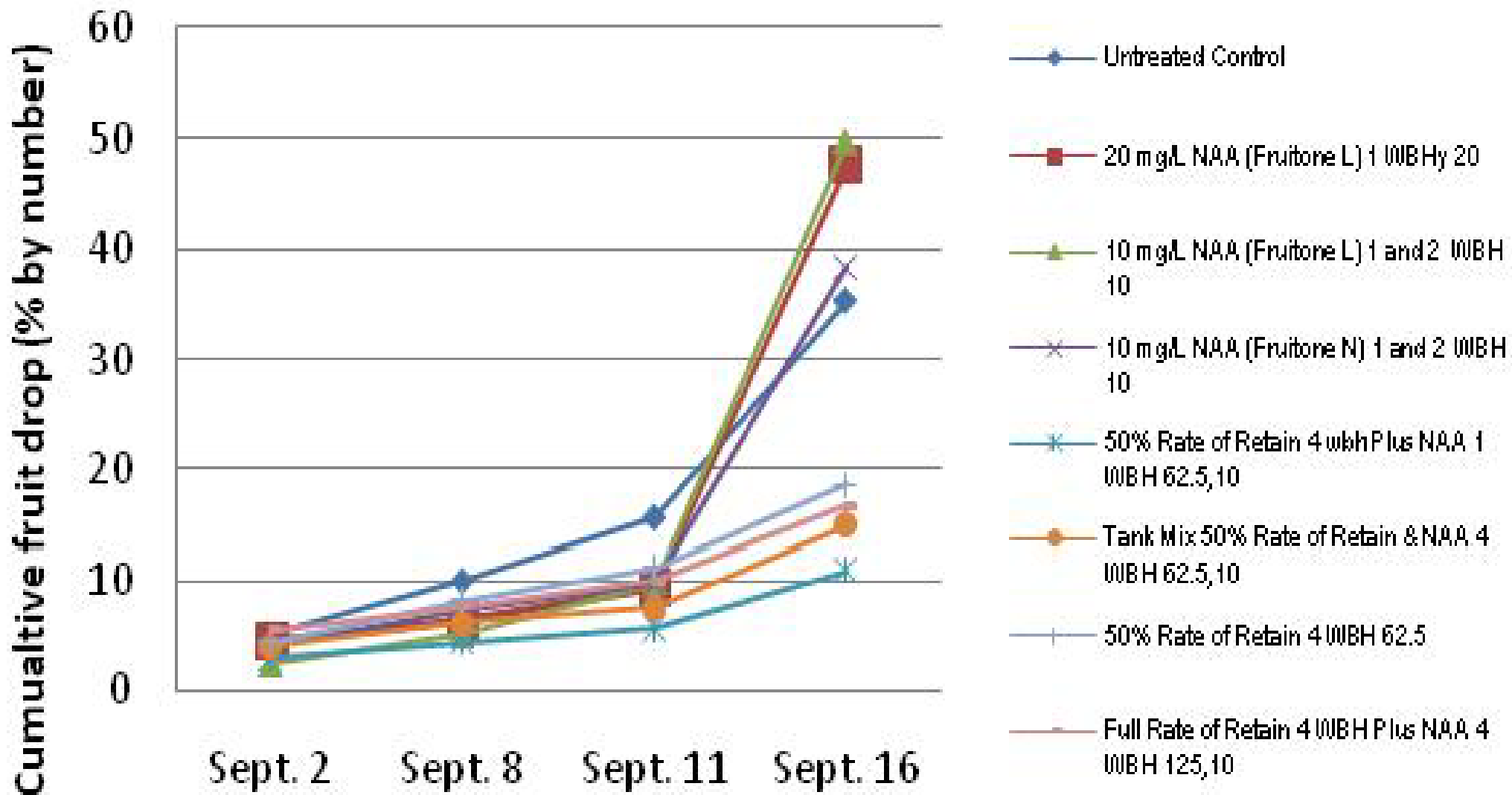
Materials and Methods

- 🍏 15 year old commercial orchard of 'McIntosh'/M.26
- 🍏 4.26 m x 6.1 m (385 trees/ha)
- 🍏 commercial air blast sprayer
- 🍏 single tree plots at 1379 kPa, 1995 L/ha
- 🍏 RCBD with six replications and 8 treatments
- 🍏 Treatments applied 21 August (3-4 WBH) and 2 September (1 WBH)
- 🍏 Fruit were harvested 9 -16 September

Treatments

1. Untreated control
2. 20 mg/L NAA (Fruitone L) 1 WBH
3. 10 mg/L NAA (Fruitone L[®]) 1 and 2 WBH
4. 10 mg/L NAA (Fruitone N[®]) 1 and 2 WBH
5. 62.5 mg/L AVG (50% rate of Retain) 4 WBH combined with NAA 1 WBH
6. Tank mix 62.5 mg/L AVG (50% rate of ReTain) and NAA (Fruitone L[®]) 4 WBH
7. 62.5 mg/L AVG (50% rate of ReTain) applied 4 WBH
8. 123 mg/L AVG (50 grams AVG per acre) applied 4 WBH plus NAA (Fruitone L[®]) applied 4 WBH

Figure 2. Cumulative fruit drop of 'McIntosh' apples in response to Fruitone (NAA)





Untreated control



20 ppm NAA (Fruitone L) 1 WBH



10 ppm NAA (Fruitone L) 1 & 2 WBH



Tank Mix 50% Rate of Retain & NAA 4 WBH

McIntosh - Fruit Quality

Table 7. Effect of Fruitone N and Fruitone L , alone or in combination with ReTain, on surface blush, starch index, mean fruit weight, soluble solids, and firmness of fruit harvested 9 Sept and 15 September and stored until 29 September 2008.

Treatment		Percent of surface colour red (%)	Starch Index (scale 1-8)	Mean fruit wt (g)	Soluble solids (BRIX)	Fruit Firmness 9 Sept (N)	Fruit firmness 29 Sept (N)	
Untreated Control		78	5.7	156	10.8	62.6	ed	59.7
20 mg/L NAA (Fruitone L) 1 WBH ^y	20	83	6.3	163	11.2	60.6	f	52.7
10 mg/L NAA (Fruitone L) 1 and 2 WBH	10	87	6.3	157	11.0	61.6	ef	55.2
10 mg/L NAA (Fruitone N) 1 and 2 WBH	10	84	6.6	149	11.1	63.1	ecd	55.3
50% Rate of Retain 4 wbh Plus NAA 1 WBH	62.5,10	78	5.5	154	10.8	64.8	bc	64.0
Tank Mix 50% Rate of Retain & NAA 4 WBH	62.5,10	76	5.9	153	10.7	65.4	ab	63.4
50% Rate of Retain 4 WBH	62.5	76	5.4	150	11.0	67.0	a	63.4
Full Rate of Retain 4 WBH Plus NAA 4 WBH	125,10	72	5.7	157	10.8	64.5	bcd	63.2
Significance ^z		***	***	ns	ns	***		***
LSD (P=0.05)		5.7	0.39	13.9	0.54	1.9		2.1
P value		<0.0001	<0.0001	0.5643	0.5754	<0.0001		<0.0001

^z ns, ***, **, *, indicates non significance and statistical significance at P=0.001, P=0.01, and P=0.05, respectively

^yWBH - Weeks Before Harvest

Acknowledgements



Ontario



UNIVERSITY
of **GUELPH**

Debbie Norton
Lauren Andres